

Company Information

Historical Events:

Clyde-Apac©, has been engaged in the manufacture and marketing of a wide range of products, including OEM vehicle jacks for Ford, Mitsubishi, Holden, Toyota, Mazda, Honda, Gas Turbine filter houses, Commercial HVAC, and industrial filtration, EMD, GE Bombardier and Alcoa locomotive engine, car body, and wayside fuel filtration systems, dust collection systems, clean room equipment, laminar flow laboratory cabinets, Lemcol, Revvo, wheels and castors, Wheel product pneumatic wheels, Lemcol materials movement and lifting, Lemcol gravity conveying systems, Acu-torque torque multipliers, Selson air jacks, Alemite lubrication, Mocal ratchet hoists, Yale fork lifts, Clayton steam generators, ball bearings, Vornado air conditioning units, Valmet straddle carriers, Xenorol live roller conveyor, Portec belt power turns, and Shuttleworth slip-torque powered conveyors. In addition to Train washing stations, passenger train doors, and Tangara car bogie underframe brackets!

- **1898** Karl Engelbrecht the founder of APAC Industries is born in South Australia
- **1922** Engelbrecht establishes a motor and cycle repair service station on Hyde Street, and following expansion re-locates to Pirie Street Adelaide. Employing five people one of whom Donald Lienart a 15 year old apprentice who becomes the first APAC employee apart from Engelbrecht to record 25 years service.



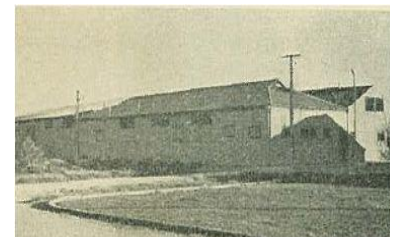
- **1923 July 23rd** – **Automobile Parts and Accessory Company Ltd**

“APAC” Formed on a capital of 10,000 shares three main shareholders, Engelbrecht, William Davis, and William Cornell
The purpose to manufacture garage equipment including small Jacks, luggage racks, tyre and compressor items.

- **1925** Engelbrecht participates in the Australian Federal Government Board enquiry into Tariff rates. [Click here](#)
- **1928** APAC catalogue includes over 275 garage equipment products from Jacks to car lift hoists.

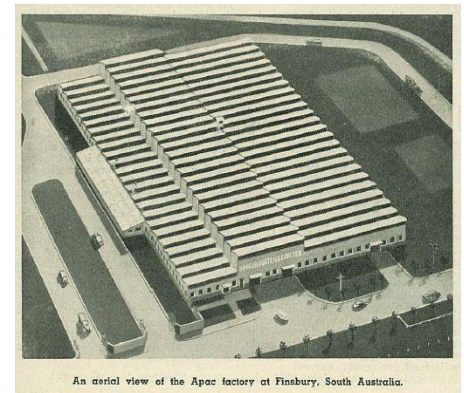


- **1929** Apac locates to larger premises in College Street Port Adelaide.
- The Lemco Engineering subsidiary (LEMCOL) was created for manual handling raw material and finished goods around APAC's three facilities in Port Adelaide.

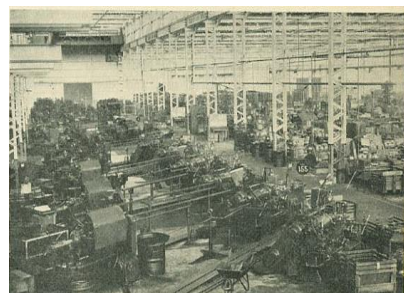


[Click here to read Australian Exporter edition of 1949](#)

- **1940's "Specialisation"** was the new buzz word for manufacturing and Apac jettisoned all its garage equipment to focus on every type of jack that could be designed for use with cars, trucks and utilities. [To read the 1949 article click here](#)
- To see how Apac Industries raised 40,000 pounds to cover further investment [Click here](#)
- The company policy was to construct and test a jack or axle stand that would never have to be thrown away. Should a component fail through natural wear and tear the company held stock of spare parts for upto twenty years following product cessation.
- During the second world war steel balls became unobtainable and Apac designed and developed a steel ball bearing plant. This plant went onto become the largest in the southern hemisphere.
- **1945** a twenty acre site in what was then the munitions factory was converted to industrial use and Apac lease 13.1/2 acres from the Commonwealth of Australia.



- **1947** Apac employed 360, conditions were ideal, and were considered pace setters at the time offering preference to returned ex-service men good lighting on the shop floor, full library for administration and technical staff along with full employee vocational leave. Apac sponsored over thirty young management trainees.
- Centre bay at the new Finsbury factory
Multi spindle machines



Read :

- [How Apac made the move to Finsbury](#)
- [250 scale models used and no production time loss](#)
- [Finsbury site plan](#)
- **1947** Fred Reckitt's machine is turning out 17,000,000 ball bearings a year

Read:

[Communists at Apac](#)



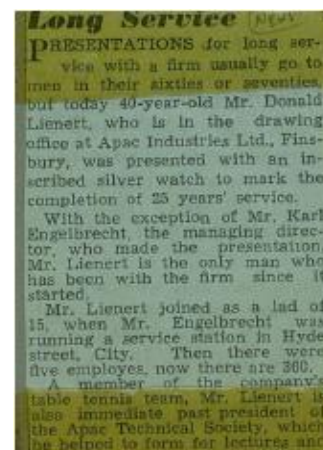
Adelaide workers including Don Gaskin 16 years old from Apac want nothing to do with strikes



- **1947** 40 year old Mr Donald Lienert became Apac's first twenty five year long term employee Mr Lienert started as a fifteen year old at Pirie Street.

- Apac's export development market was growing
- Click below to read post war APAC export travel reports:

- [Apac and Lemcol in South Africa report](#)
- Apac ships 200 Lemcol trucks to Pakistan
- [Enterprising Apac Jacks claim Bombay 1948](#)
- [Anthony Eden Foreign Minister MP for the UK visits Apac](#)
- 156 pounds the limit you can take into the USA
- [ABC News Government policy prevents Apac importing machines](#)
- [Read Various 1948 to 1950 Overseas Trips to Ceylon, Malaysia Singapore India](#)



7/9/46

APAC PROFIT RECOVERS

Profit of Apac Industries, Ltd., which will shortly make a £40,000 preference issue to finance expansion and transfer of activities to Finsbury (SA), recovered to £16,855 for the year ended June before providing for taxation. This compares with £8,025 in the previous year, and with £14,681 and £15,662 back to 1943.

Taxes actually paid during the year amounted to £3,483, compared with £2,412 in 1945, £8,909 in 1944, and £2,393 in 1943. Preference dividend is steady at 8 p.c. requiring £680.

Since the close of accounts, capital has been increased from £21,500 to £32,000 in 13,000 pref. and 30,000 ord. This reflects issue of 8,100 new shares for redemption in their dividend rate from 1 p.c. to 5 p.c. and a bonus issue to ordinarys of 25,000 shares.

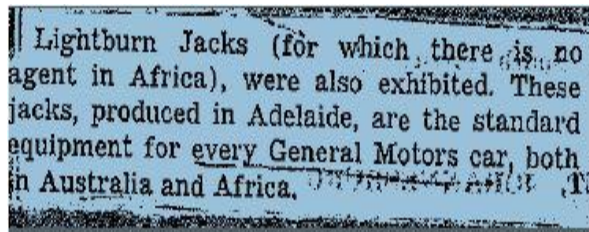
Funds were provided as to £10,200 by realisation of assets, written up £11,817 altogether and as to £20,900 from capitalisation of a special reserve. After giving effect to these adjustments, balances on the basis of June 30 figures compare as follows—

	June 30	Aug. 30
Cash	£ 30	£ 30
Sundry debtors	33,207	33,207
Stocks	48,548	48,548
Current Assets	£81,852	£81,852
Liabilities	58,261	58,261
Surplus	£23,591	£23,591
Fixed Assets	32,043	43,988
Intangibles	3,775	3,775
Shareholders' funds	£59,438	£71,221

Less representing reserves £24,083
Surplus to shareholders of £2,720, general reserves now total of £10,661

- **1948** Apac builds O.E.M car jack for the new Holden
- Apac supply to G.M. Holden continued for sixty years,
- Between 2001 to 2005 with 300 employees Clyde- Apac manufactured and supplied over 450 jacks daily on a just in time "JIT" basis to GM Holden Elizabeth vehicle assembly line.

[Click to read the new 1948 Apac Drum and Barrel Handler](#)



- **1950** Apac Industries in South Africa [click here](#)
- **1951** the largest Garage equipment and Materials Handling Manufacturer in the Empire exhibits its extensive catalogue:

APAC PRECISION BUILT EQUIPMENT
BEARS THE BURDEN OF MANUAL EFFORT . . .

APAC specialises in building equipment designed to magnify man's strength and to minimise and expedite man's efforts.

In factories, warehouses, stores and business premises of all kinds there is a constant demand for APAC-built Lemcol Materials Handling Equipment such as Lift Jack, Systems and Elevating Truck, stock re-location, 2-Ton Trailers, for quantity materials handling, Wheels and Casters for specialised mobile equipment, Hand and Platform Trucks and Drum and Barrel trucks and cradles.

The APAC name itself is famed in its connection with Hydraulic Car and Truck Jacks. Mechanical and Hydraulic Bumper Jacks, Car and Truck Jacks and giant Garage Jacks. Mechanical APAC also manufacture "Lempac" Industrial Steel Balls

APAC AUTOMOTIVE JACKS

LEMPAC MATERIALS HANDLING EQUIPMENT

LA29

APAC INDUSTRIES LIMITED, FINSBURY, (South Australia)



WIDE USES FOR STEEL BALLS

To cater for the numerous uses to which case-hardened steel balls can be put by manufacturers in Australian and export markets alike, Apac Industries Ltd., of Finsbury, South Australia, has brought its production capacity for this line to a stage where it can accept unlimited orders for steel balls in eight sizes. This firm points out that in addition to those medium or low speed applications which have always been recognised as calling for balls—such as the bicycle trade, roller conveyors, casters, filing cabinets and certain electrical equipment—there are innumerable gadgets and appliances in which ball bearings offer a decided advantage over plain bearings. To mention just a few—many mobile or working toys, perambulators, tricycles, household equipment and kitchen gadgets come to mind as examples of production fields in which the merits of ball bearings from the angle of both sales talk and sheer efficiency—in a word, customer attraction—are too frequently overlooked. Handbag makers and others requiring soft-ground balls which are easy to weld are specially catered for by Apac. Apac Industries Limited's own range of auto jacking and other garage equipment, together with materials handling equipment, offers an abundance of other instances of useful application of steel balls. Indeed, it was to supply its own requirements when the previous English and American supplies were suddenly and completely interrupted during World War II that the company first installed a plant to produce steel balls.

Grease guns and grease nipples are among automotive and industrial lines of other manufacturers within and beyond the borders of South Australia who have taken advantage of this valuable source of supply of "A" grade carbon or case-hardened balls. Incidentally, they are regularly checked for hardness, sphericity and load carrying capacity.

The brand name "Lempac" attached to the steel balls marks the continuation of traditions with names well-known in Australia and far beyond—Lemcol, which has had relation particularly to the materials handling side of the business, and Apac which has always figured in the auto equipment side.

Range of Sizes

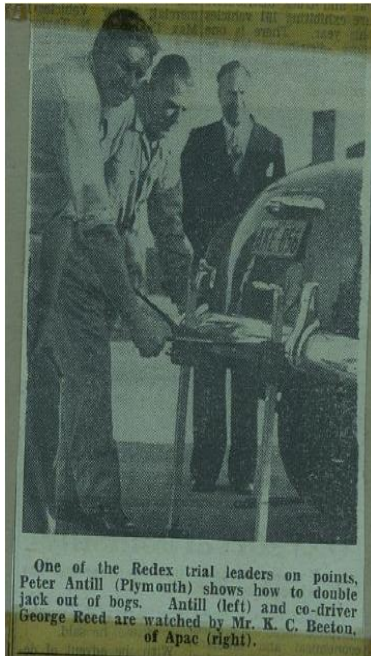
The Lempac Steel Ball is a ground case-hardened ball which is manufactured in sizes 1/4", 5/32", 3/8", 7/32", 1/2", 5/8", 3/4" and 1 1/2" and conforms to the Standard "A" grade specifications of leading international manufacturers.

The company guarantee "A" grade specifications, but are in fact holding much finer tolerances. The ball is case-hardened to a depth which is more than sufficient to cater for all degrees of wear; and by utilising a core refining process, which does away with any clear cut definition between the case hardening and the normal core, an extremely durable ball is obtained.

- **1951** Apac sponsored the first two day motor road trials.

- **1953** The Kangaroo Catcher

- **1953** Apac Jack demonstration



KANGAROO CATCHER

A triangular kangaroo catcher to protect the radiator will be carried by ace Sydney driver D. H. (Peter) Antill.

His Plymouth has two aircraft seats. Along one side is a stretcher.

The car is fitted with an extra speedometer, a windscreen water spray to clear mud, and a small navigation table.

In Adelaide on Friday on a test run over the course, he was met by Mr. K. C. Beeton, of Apac Industries Ltd. He took on four jacks — two bumper and two hydraulic.

He said that with the bumper jacks at each end of a bumper he could make a "bushman's hoist" to work on the car or to pack it underneath to get out of a bog. The hydraulic jacks could be used to bend or straighten steel.

Peter Antill, winner of many major trials, is one of the favored competitors for the endurance test.

With him are designer-mechanic George Reed, who has designed and built several Australasian

TWO-DAY S.A. CAR TRIAL

Cars ranging from family saloons to the latest sports models will take part in the Apac week-end trial of the Sporting Car Club next Saturday and Sunday.

They include a Morris 10, Austin A/40, Vauxhall saloon, six MG's, a Singer, and two Jowett Javelins.

All cars were placed on the same footing in such events because lower-powered cars usually had a compensatory advantage in their lower weight, the club secretary (Mr. W. D. Verco) said today.

"In some boggy patches or stiff climbs the higher-powered cars don't have a 'look in' with the small ones," Mr. Verco said.

"We had one case where a big Ford was spinning its wheels in a vain effort to get through mud while a baby car sailed round it and sped onward."

Special tests

The 200-mile course to be followed, leaving Felixstowe on Saturday afternoon, will take the 19 entrants to Nuriootpa that evening and—after special tests on an Angaston property on Sunday morning — on to Swan Reach and Mount Pleasant areas on Sunday afternoon.

The event is the first for a shield donated by Apac Industries Ltd., of Finsbury, for perpetual competition, and a trophy presented by the company for each year's winner.

- **1954** Apac trial event K Richardson in a MG TD declared winner.



APAC trial

K. Richardson, who drove an MG TD, has been declared provisional winner of the annual APAC Trial conducted last week by the Sporting Car Club.

Water crossings following heavy rains caused great trouble. Most difficult were near Tanunda and Fords. Two cars had pushed.

A 40-ft. tree fell across the track near Woodside. Crews of the larger cars had to chop it down, and an MG car drove beneath part of it. Results:—

K. Richardson (MG TD), 236 points, 1; G. McEwin (MG TF), 240, 2; J. McLellan (V8), 284, 3; Invicta Motors, driver R. Howard (Austin A30), 292, 4 and under 1,100 c.c. winner.

- **1954** Apac Industries Pty Ltd acquired by NSW engineering group Clyde Industries and Karl Engelbrecht departs with sales and profit at a high "I afford shareholders much satisfaction"
- Profit increase 4 fold
- No dividend declared
All capital held by new Owner
Clyde-Industries P/L



Mr. O. G. EDWARDS, who has been recently appointed general manager of Apac Industries Ltd. Mr. Edwards was previously general manager of Clyde Batteries Pty. Ltd., and Greenpoint Shipbuilding and Engineering Pty. Ltd., both subsidiaries of Clyde Industries Ltd.

Big Rise In Apac Earnings

Following record sales, net profit of Apac Industries Ltd. increased fourfold in the year to June.

Latest profit came out at £68,608 after £38,186 provision for tax, compared with £17,024 last year (adjusted for £1,782 tax under-provided) and the previous peak of £32,309 in 1951.

No dividend is declared on ordinary capital—all held by Clyde Engineering Co. Ltd.

Dividend on publicly held prefs. is more than 12 times covered, absorbing £5,360.

Expansion during the year carried stocks from £309,926 to £365,874, while debtors are £67,047 higher at £213,261.

Apac Sales At Peak

Record sales were achieved by Apac Industries, Ltd., in the year to June.

Profit is likely to reach the highest level yet recorded, directors say in a circular to shareholders.

This more than confirms the April forecast, they add.

Final accounts are expected to be published in about two months.

Directors say they believe these will afford shareholders "much satisfaction."



- **1955** Clyde-Apac Pty Ltd becomes first company in South Australian to win the coveted Queens award for exports.
- **1955** Clyde-Apac manufacture and launch "Alemite" range of lubrication equipment

HEALING NEWSFLASH

ALEMITE Introduces the Revolutionary "RED-A" BUCKET

ON THE SPOT LUBRICATION SYSTEMS

FOR THE SPEEDY & EFFICIENT DISPENSING OF ALL OILS & GREASES:

This amazing new ALEMITE product brings all the advantages of the modern lubrication right into your own farm and machinery shed and automatically enables you to perform your own lubrication with "Service Station" efficiency.

EASY TO FILL CARRY USE!

Oil and grease can be carried "right" from oil can, drum, or container, without pouring, spilling, or dripping.

Cartridges quickly refill, can be used over and over again, and are completely sealed to keep out dirt and moisture.

Long, low, with built-in foot rest, easily carried by one person.

✓ Check these Outstanding Features which make it a MUST on every farm!

- Lubricant can be obtained at the most economical price by buying in bulk containers.
- The lubricant is kept "refrigerated" close from "can-filler to bearing".
- Cartridges hold 27 lbs. of grease, even by avoiding the wasteful filling of grease guns.
- Pump has dynamic force-feed primer which assures constant grease delivery over a wide temperature range.
- Steel displacement type high-pressure piston cannot "wear out". No top leathers or synthetic members to replace.

Available in two types:

HIGH PRESSURE MODEL 7137 For service of most bearings, gear, bushings, and other parts. Holds 27 lbs. of grease. P.T.T. (piston pressure) delivers 1000 P.S.I. in 1/2 minute.

VOLUME MODEL 7138 For service of most bearings, gear, bushings, and other parts. Holds 27 lbs. of grease. P.T.T. (piston pressure) delivers 1000 P.S.I. in 1/2 minute.

Available in a variety of sizes.

"Form Right with ALEMITE"

ALEMITE the leader in LUBRICATION

WHAT'S NEW IN Equipment

Alemite Equipment Back on Australian Market

Apac Industries Ltd. (Finsbury) Ltd. are now making the well-known Alemite equipment under license from the Stewart Warner Corp. USA.

Among the numerous lines offered in the new Alemite lines are: the "overhead" or "floor" mounting, the "adjust-a-hot" control valve, and the "adjust-a-hot" control valve.

All models in the new range are ball-bearing mounted. The new guide has rollers on all four sides to prevent jamming.

MR. GARAGE PROPRIETOR!

World Famous

ALEMITE LUBRICATION EQUIPMENT

is now available in Australia

- ★ OVERHEAD & FLOOR REELS
- ★ "ADJUST-A-HOT" CONTROL VALVES
- ★ TOTALISING METER VALVES
- ★ WIREBRAID HOSES
- ★ BALL BEARING SWIVELS
- ★ HEAVY & STANDARD DUTY PUMPS

This is the symbol of Alemite Lubrication equipment which is made under license from the Stewart Warner Corporation of the United States of America, whose long years of research and experience have made them world leaders in the field of lubrication.

Alemite Lubrication equipment which collects in two factory sealable in Australia and which are available to Alemite in new available.

For Information and Demonstration call us:

A. G. HEALING LTD. ADELAIDE, MELBOURNE, SYDNEY, HOBART, LAUNCESTON & ADELPHI (W.A.) LTD.

Alemite QUALITY Equipment is Manufactured under License by APAC INDUSTRIES LIMITED, FINSBURY, S. AUSTR.

Overhead hose reel.

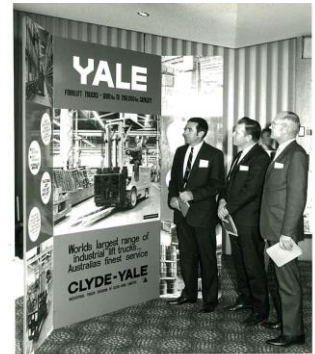
"Adjust-a-hot" control valve.

THE ALEMITE LUBRICATION EQUIPMENT

The Alemite low-pressure equipment is designed to be used on the engine oil and on the gear oil. It is a simple, efficient, and reliable method of lubrication which requires no special equipment, no special valves, and no special containers. It is a simple, efficient, and reliable method of lubrication which requires no special equipment, no special valves, and no special containers.

Alemite marketing valves.

- **1958** Clyde-Apac's Doug Gordon with others Exhibits the launch of Clyde-Yale Fork Lifts in Australia
- **1959** Clyde Industries transfer the Farr Company license from Clyde Engineering Granville NSW to Clyde-Apac and commence manufacture of the pamic range of filters for trucks and engines
- **1959** Clyde – Apac manufacture the Clayton Steam Generators Distributed by Clyde-Westeels.



- **1964** Clyde-Apac sign a distribution agreement with Farr Company of El Segundo California USA, for Australia and its territories.
- **1967** Apac Jacks still dominated the business
- Annual leave become popular with Industry in a strong economy and leave loading was the new 'must have' to keep employees.

- The sixties saw war in Vietnam, Beatles in full swing, flower power rule in San Francisco, and Carnaby Street the fashion and music centre of the world.

Working Aussies were gaining more free time and hitting the road. Clyde- Apac seized the initiative launching the A1 bottle jack, and series "Don't Risk It" adverts.

One thing Clyde-Apac didn't move on was to pay the leave loading burden of 15% for staff employees.



- 1969 Clyde-Apac comes clean about the pub with no beer

The inside story of the pub with no beer



Out here on the Stralecki track, there's a small pub with great beer — as a rule.

Blue, the driver of the beer delivery truck, has always told us that if there was one thing we could bet on, it would be getting a regular drink.

His truck would never let him down, he said.

It's a good, reliable one, and Blue really looks after it.

Blue is not the sort of bloke who'd let an omelette — intentionally.

But today the pub has no beer.

Seems Blue had a blow out crossing the dry creek bed and his hydraulic jack just isn't up to doing the job.

Apparently the jack is one thing about his truck that Blue didn't bother much about.

Anyway, we shouldn't have much longer to wait.

Curly is on the way out to him with an APAC hydraulic jack, one of these 7 ton jobs.

The garage gave Curly the choice from the big APAC range, but the one he took will do the trick.

If Blue doesn't get an APAC jack for that truck we blokes will do it in and buy it for him!

There's nothing so miserable as a pub with no beer.



85/457



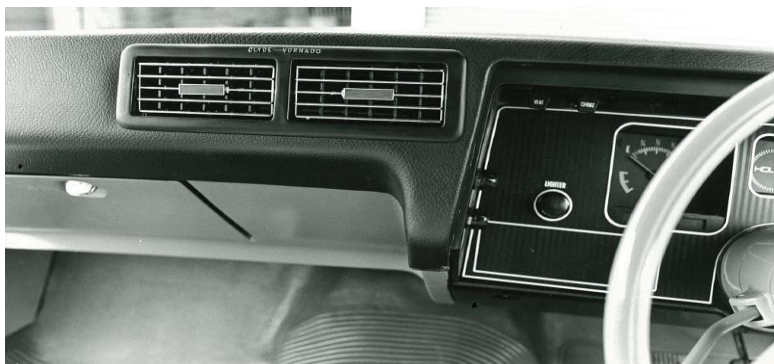
Apac Industries Ltd
WOODVILLE NORTH, STH. AUST.
A Member of the Clyde Industries Group

automotive SERVICE. SEPTEMBER. 1969

- QANTAS and Clyde-Apac Team up to supply the ground support equipment including the baggage carts and transport conveyor systems for the 747 aircraft.



- **1970** Clyde-Apac export market sales were growing with demand exceeded supply. To fix the problem management of the day scaled back export sales to London, Hong Kong, Singapore, Cape Town and New York to supply the Australian domestic market.
- **1970** Clyde-Apac Vornado the first in car air conditioning unit manufactured in Australia


A vintage advertisement for Clyde Vornado Refrigerated car air conditioning. The ad is set within a large, arched frame. At the top, it says "Drive cool arrive cool in 70° comfort". Below this, there is a paragraph of text describing the benefits of the unit, such as "Clyde Vornado refrigerated air conditioning will cool the hottest heat wave in your car." and "Your drive is well protected for air conditioned comfort." The text continues to describe the unit's features and availability. Below the text, it says "PRICED FROM \$350 INSTALLED". At the bottom, there is a list of dealerships in various Australian cities, including Perth, Adelaide, Melbourne, and Sydney. The ad also includes the company name "CLYDE VORNADO Refrigerated car air conditioning" and a note that it is a division of the Clyde Industries Group.

Drive cool
arrive cool in
70° comfort

Clyde Vornado refrigerated air conditioning will cool the hottest heat wave in your car. Your drive is well protected for air conditioned comfort. Clyde Vornado air conditioners provide your car with cool and secure of excessive heat, noise, fumes, and air, creating summer peace and quiet. Drive in the comfort of Clyde Vornado. The nearest Clyde Vornado is located by 12/12 Vornado unit is sold, installed and serviced by a national network of specialist distributors. However, Clyde Vornado car air conditioning can be directly transmitted to your car.

PRICED FROM \$350 INSTALLED

4th Qtr. Car Service, PERTH, Phone 41 8000	United Motors Ltd., ADELAIDE, Phone 41 4780	Harold Smith, MELBOURNE, Phone 41 8000
Autos Above W. Ltd., ADELAIDE, Phone 41 7000	City Motors Pty. Ltd., ADELAIDE, Phone 41 4780	Wendy Smith, SYDNEY, Phone 41 8000
City Motors Pty. Ltd., ADELAIDE, Phone 41 7000	City Motors Pty. Ltd., ADELAIDE, Phone 41 4780	Wendy Smith, SYDNEY, Phone 41 8000

Wendy Smith, SYDNEY, Phone 41 8000

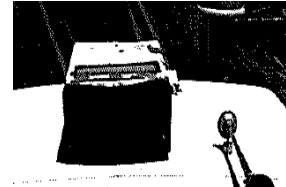
CLYDE VORNADO
Refrigerated car air conditioning

Manufactured and sold by CLYDE APAC LIMITED, Woodville North, S. Aust. 5012
A division of the Clyde Industries Group.

- **1971** A vehicle aftermarket version of Clyde-Vornado becomes available for the motor enthusiast



- **1971** Clyde-Apac entered the Truck Air Conditioning aftermarket Market with a license from Kysor for the range of roof mounted air conditioning units.



- **1971** Clyde-Apac released the range of 240-2T, 245-5T, 310-10T, and 410-20T, series hydraulic mobile jacks for the garage market. A new range of axle stands 770, 772, 775 were introduced and legislation started to change on workshop safety resulting in upgraded test facilities to safe working loads of at least 3.5 times rated capacity, with mechanical destruction type testing for all jacks and stands.



- **1971** Clyde-Apac Jack and Alemite advert

Apac Jacks & Alemite Lubrication Equipment for the road & workshop

Apac Jacks and Alemite Lubrication Equipment have been designed and engineered to provide continuous dependable operation. There is an Apac Jack to suit every need and a range of Alemite lubrication equipment designed for all applications. Trust the products of the proven, precision manufacturers - Clyde Apac Limited.

Featured are some of the Apac and Alemite products: "Apac" Garage and Automotive jacks and safety stands. "Alemite" Red-A-Bucket pumps "on-the-spot" lubrication system.

APAC

CLYDE-APAC LIMITED

Burleigh Avenue, Warrington, North, South Australia. A member of the Clyde Industries Group.

S.A. Road Transport Year Book, 1971.

- **1972** Clyde- Apac release new Lemcol Fork Truck while the Yale forklift was gaining a foothold through its association with Clyde-Apac in Australia.

COMPANY NAME ADDRESS

TELEPHONE

LEMOL HYDRAULIC HAND LIFT TRUCK MODEL L340.

LEMOL
the name that carries weight

New!

LEMOL MODEL L340
Lifts, moves and locates 4,000 lbs.
Pallet loads faster and easier than any other model.

Model L340 is a hydraulic lift truck with many added features and advantages. It is not usually available in lift trucks. These include spring loaded, full bearing mounted swivel handle, nylon tyred wheels for easy rolling, neutral position in hydraulic system - to assist maneuvering of truck. A traveling position has been provided in the hydraulic block assembly so that the truck can be maneuvered without raising the load to be raised with pump piston engaged. Operator fatigue is reduced by 60 per cent by engaging the three position foot pedal in the central position. Depressing the three position foot pedal by the heel releases the valve to allow the oil to flow back to the reservoir. Speed of lowering is under the control of the operator.

SPECIFICATIONS:
Capacity 4,000 lb. 20% 22% Low Height 31 1/2"
Overall Width 19" 20 1/2" 22" Raised Height 58"
Fork Lengths 42" 48" 50" Hydraulic Lift 58"
Front Wheels Lemcol 8" Nylon with anti-friction bearings
Rear Wheels Nylon 3 1/2" diameter x 4 1/2" long with roller bearings

Contact the Lemcol Distributors in your area.

CLYDE-APAC LIMITED
Burleigh Avenue, Warrington, North, South Australia.

FRANK SELLS YALE SPARE PARTS
(But not too many!!)

That's Frank's problem. Like all Yale distributors he carries a full supply of spare parts. And that's his guarantee. But chances are they'll be there a long while before you'll be phoning Frank.

Yale Trucks hardly ever wear out. They're built mighty tough. And the men who own 'em care. That's why Clyde-Apac is your nearest distributor. They'll put you onto Yale profitability quick dead.

Take your pick from the mighty Australian-made models or any of the 100+ proven Yale range from U.S.A., U.K. or Germany.

Yale trucks last and last and last and last and last.

CLYDE-APAC LIMITED

- **1972** A new Logo with two stand out colours Red and Black but equally fine in Black & White' The Clyde Industries insignia of the “*Phoenix Rising from the Ashes*” signified the Clyde Industries strategy for acquiring distressed companies and re-building them.

“The design of our new symbol is only a drop in the ocean compared with the designs now on our drawing boards”



Two big names in manufacturing and engineering—Clyde and Apac are behind this new symbol. Its forward-looking style is symbolic of the great innovations to come from the Apac unit of the Clyde Industries Group of Companies. Look for it. Manufacturers of over 600 products in engineering materials handling, automotive and industrial lubrication, jacking, fork lift truck, automotive air conditioning and steam generating equipment.



CLYDE-VORNADO CLAYTON YALE APAC-JACKS LEMCOL ALEMITE

CLYDE-APAC LIMITED AUSTRALIA

A Member of the Clyde Industries Group. Head Office: Bulleigh Avenue, Woodville North, South Australia. Branches at Melbourne, Sydney, Brisbane, Perth.

- **1974** Clyde-Apac Pty Ltd is deregistered and becomes a trading division of Clyde Bayswater. An uncertain future faced Clyde-Apac during the Whitlam period with strikes at coal mines disrupting production and affected the ability to supply customers.
- **1976** Clyde-Apac invested heavily in a Milwaukee Tooling centre for precision high speed manufacturing. As the advert claims there appeared to be a need for this type of work but other than automotive manufacturers and its own requirements it largely failed to attract any external business.

Clyde-Apac announces new service to industry.

[You can save machine cost and valuable lead time by using this advanced computer tape machining service.]



Clyde-Apac has installed the Milwaukee Machine Tooling Centre. This new service is designed to provide a complete solution for the production of complex, precision machined parts. The service is available to all customers of Clyde-Apac and is designed to meet the needs of the manufacturing industry. The Milwaukee Machine Tooling Centre is a state-of-the-art facility equipped with the latest computer-controlled machinery. It is designed to produce parts with high precision and accuracy. The service is available to all customers of Clyde-Apac and is designed to meet the needs of the manufacturing industry.

Clyde-Apac is a member of the Clyde Industries Group of Companies. Head Office: Bulleigh Avenue, Woodville North, South Australia. Branches at Melbourne, Sydney, Brisbane, Perth.

CLYDE-APAC LIMITED

- By the close of the decade employment had slumped to a hundred and low cost jacks were entering Australia from mainly Taiwan targeting the Clyde-Apac bottle and trolley jack market.
- **1980's** brought about rationalization for the Australian manufacturing sector with Senator Button releasing his plan for the automotive manufacturing sector. Traditional large business rationalized their product portfolio, and with the banking sector opening up many Australian manufacturing industry giants were raided and asset stripped by many entrepreneurs. Clyde Industries responded by selling over 250 properties located around Sydney Harbour, and other industrial property sites considered none core. With these funds they invested in new businesses such as Clyde-Apac "Valmet" straddle carriers and Clyde-Apac "Xenerol" powered conveyor.

CLYDE-APAC Powered Conveyors

- Xenerol live powered roller conveyor, was first introduced into the Australian market in 1981 with major system installations at Streets Ice Cream, Sutton Tools, Tetra Pak, Email Orange, Rank white goods Blacktown, Kellogs and Dexion.



A complete Clyde-Apac service team was located at BHP Port Kembla and Westernport facilities to service and maintain the Valmet Straddle carriers. This arrangement continued until 1997 when Valmet entered the Australian market direct.



- **1983** Clyde-Apac "Apac Aire" passenger rail car a/c units were now being trialed by NSW railways for future Tangara suburban trains, and these A/C units were the first in the world fitted with Clyde-Apac Farr 30/30 disposable filters.

The futuristic Tangara Train



- **1983** Clyde-Apac Farr 30/30's were fitted to 81 Class Locomotive Apac Aire A/c unit in NSW and Clyde -Apac manufactured the Farr Dynavane inertial filter systems and RC engine assemblies.

- Other networks such as NZ Rail, V/Line, WAGR, SA and Q/R specified Clyde-Apac manufactured Farr Co systems as standard requirement on new and refurbished locomotives. Farr Company remained as an option in EMD, GE, and Bombardier locomotives in the ROW.



Clyde-Engineering Built 81 Class



XPT Passenger train filtration System modified for Australian Railroad conditions

- **1983** Clyde-Apac restructures to specialize in Railway and Industrial filtration and manufactures Farr 200B fuel systems with many installed in various NSW, Qld, WA, Vic railway maintenance depots and Freeport Indonesia. Five bowl 200B lube systems installed on V'line locomotives.
- **1984** "Apac Aire" business sold to Sigma Air Conditioning. Sigma proceeded to fit Clyde-Apac manufactured Farr 30/30 filters on rail car systems in Australia, New York, Hong Kong, Singapore, Kuala Lumpur and Chicago. This effectively pioneered the demand in many overseas markets for large volumes of Clyde-Apac Farr disposable filters.
- **1985** Clyde-Apac acquires Selson air jacks and Acutorque Torque Multipliers from the Selson family.



Selson video released ... to view press link [..\..\Desktop\Video \(NTSC\).avi](..\..\Desktop\Video (NTSC).avi)

- **1985** Two skid mounted Clayton Steam generators installed with two alternating pressure relief valves in the Intercontinental Hotel. A five star hotel made more memorable because it retained the original 1849 constructed NSW treasury building in Sydney.



- **1986** Clyde-Apac acquires the Wheel products pneumatic wheel business from Hills Industries. The range included the popular dolly wheel jack used for trailers and mini all steel wheel hubs.

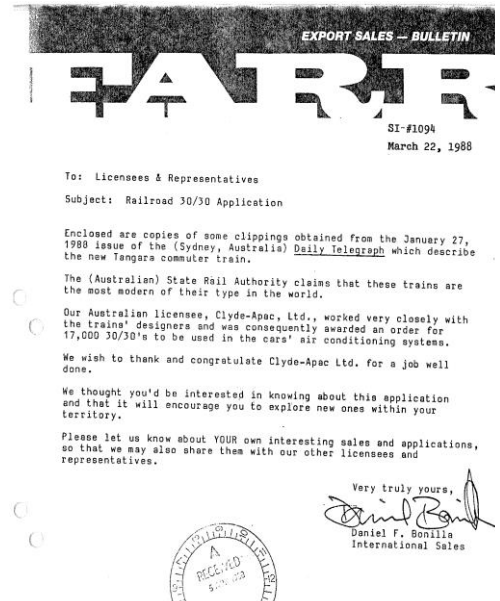


- **1987** Clyde-Apac – win \$2M contract to supply brackets and parts for the Tangara passenger rail car sub frames. Manufacture 17,000 cardboard disposable filters were ordered as the first fit for the new NSW State Rail passenger train which commenced service in 1988.

- **1987** Clyde-Apac commenced production Of the cardboard disposable filter in Australia. A product still manufactured in 2017.



- To read the complete transcript [click here](#). Farr Company USA recognizing Clyde-Apac achievement in March 1988.



- **1987** Clyde-Apac develop a new Lemcol logo to go with the new super tough Lemcol Pneumatic Castor Series and supply Holden Ford and Mitsubishi Motor vehicle car assembly plants with a new range of unique load absorbing wheels ar



- **1988** Clyde-Apac acquires the Wylie jack OEM business in response to Senator Button plan to consolidate Original Equipment manufacturing motor industry in Australia.



- **1988** Clyde-apac launch the aftermarket range of jacks and 770 axle stands through Big W, K' Mart, Repco, Auto barn, securing close to 80% of the Australian and New Zealand retail aftermarket A\$3.5M within two years. With limited growth in Australia and limited export by 1992 Clyde-Apac sold the jigs, fixtures and exited the retail market for automotive jacks.

- **1990's** heralded a strong push for free trade and growth in larger overseas markets. Clyde-Apac responded by opening a Selson office in Ohio USA and a Material Handling "Lemcol" operation in Bangkok Thailand. In Australia re structure of senior Clyde management involved the NSW State Manager relocating to Adelaide, and specialist sales teams appointed in each state for Materials Handling and Filtration products.



Clyde-Apac at Chicago Automotive Trade Fair



Selson Air Jacks
undergo test at
Andrews Air Force base
And become accepted
for use by NATO

- **1992** New Clyde Industries CEO Mr Geoff Ashton restructures Clyde-Apac into three sales and profit reporting divisions Materials Handling (MHD), OEM Automotive, and recently created Environmental Products Division (EPD).
- **1992** EPD release their new logo and product division design C.A.T.A. – Clean Air by Clyde-Apac. The distinctive design was a result of a sponsored event with Adelaide business school and some creative family member input. It linked the strength of the Apac mechanical bottle jack past to the future, applying a series of blue (air) flow hitting and being retained by the inverted embossed letters of the white C A. Which represented two stages of filtration.



- **1993** Clyde-Apac (EPD) renews the 1962 Farr Company license and includes manufacturing, becoming the first Farr manufacturing licensee to achieve ISO accreditation to manufacture the Clyde Farr 30/30 cardboard disposable filter outside the USA.
- **1994** Clyde-Apac (EPD) acquires International Filter Co, Gelman Sciences in Australia, New Zealand, and Singapore, Horizon Engineering, Filtercorp, Interfilta in Australia, Singapore, and New Zealand, and have filter manufacture in Sydney, Brisbane, Auckland, Singapore, Kuala Lumpur and Bangkok, becoming the #1 filter manufacturing company in Australia and in three years EPD has a T.O in excess of A\$32M.

Extract from the Clyde Industries 1994 ASX

The Manager, Companies
Australian Stock Exchange (Sydney) Limited
18 August 1994
Page 3

- A number of small acquisitions relating to the air filtration business the Industrial Products Group was completed during the year, together with strong internal growth, have resulted in Clyde becoming a major air filtration company in Australia.
- The "power by the hour" contract with the State Rail Authority South Wales started in June 1994 on time.
- Completion of a major integrated crushing plant for the new international quarry in Guangdong Province, China.
- The overhaul of forty 81 class locomotives was completed State Rail Authority of New South Wales.
- Agreement finalised with the Olin Corporation to assume manufacture and distribution of their pool treatment brands.

Since the end of the year:

- (a) The garage door business of Carter Holt Harvey Limited Zealand was acquired effective 1 July 1994. This acquisition the B&D manufacturing and distribution activities throughout New Zealand.
- (b) On 4 July 1994 Clyde formed a joint venture in Malaysia Rohas-Euco Industries Bhd, a Malaysian company, and Prince Pty Limited of Queensland for the manufacture and distribution of electrical busbars. This extends Clyde's well established service the power generation industry to South East Asia.

The Clyde shareholding in Selby Scientific, the joint venture agricultural equipment manufacturing operation, and Porvane Roll Inc, situated on the West Coast of the USA, were sold.

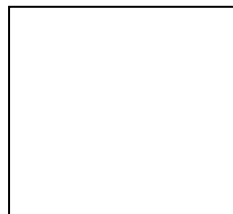
Also during the year two non-core businesses, Connor Shea Nap agricultural equipment manufacturing operation, and Porvane Roll Inc, situated on the West Coast of the USA, were sold.

- **1995** Clyde-Apac Materials Handling acquires Bassick, and Shepherd, castor businesses, while EPD acquire Enersonics NATA filter Test Centre and completes development of the S2000 software for Biological and Cytotoxic Safety Cabinets.

- **1996** Clyde-Apac EPD contract division manufactures a number of GE frame six gas turbine filter houses, and M&K locomotive systems, 81 locomotive lube and fuel assembly housings in Australia. In NZ a first carbon system is sold to M.O.N.Z. in Wellington and becomes the largest in the Southern Hemisphere, while Tan Tok Hospital (Singapore), and a further 180 BSC's are order for Malaysia hospitals.



- **1997** Clyde-Apac recorded results T.O A\$50M Net Profit at 8.5% EPD at \$33M, was the largest MHD \$15M and Automotive OEM \$3M. This was the best year recorded by Clyde-Apac. Clyde Industries announce to the ASX a \$5M investment plan to develop a new filter manufacturing plant in Malaysia to expand EPD into Asia.
- **1997** Clyde Industries merge with Evans Deakin Industries P/I and focus is now in Australia not Asia.
- **1998** Clyde-Apac restructure, downscale development and withdraw from Asia sales. In 1998 changes within the Farr family destabilize the company which is ultimately sold and the forty year arrangement with Clyde Industries which remains the largest and most profitable licensee for Farr Co is severed.
- **1998** Clyde implement a complete new range of "Interfirm" "Interfold" products which are released into the market through IFC.

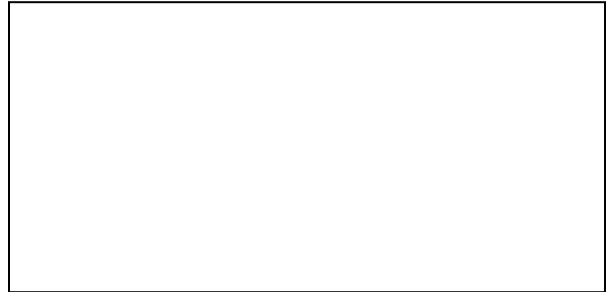


A low cost pricing strategy followed when Farr Company entered the Australian market to direct sell to what had been previously Clyde-Apac's HVAC filter distribution network.

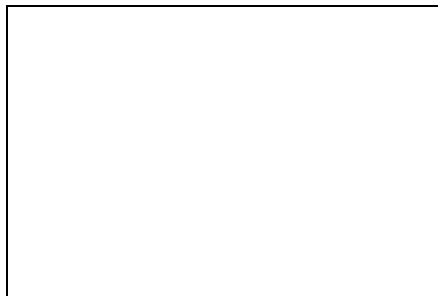
- **2001** Following two years of low market pricing and erosion of profit Clyde-Apac is sold by Downer EDI for \$6.5M and reverts back to private ownership for the first time since 1954.

- **2004** Clyde-Apac recover under renewed focus with T.O \$35M, N.P. @ 11% and employment peaking at 340 in Adelaide.

Insert jack and other job photographs



- **2005** Clyde-Apac divest some business operations in Australia and re-align these to better suit larger growth markets in Europe and in Asia.



- **2007** Steel and plastic pricing is at an all-time high, and pressures from unions forces Clyde-Apac after sixty years to advise Toyota, GM and Ford of their intention to quit the Automotive OEM market, and they don't tender for any new work.



- **2009** Clyde-Apac filtration manufacturing is relocated to NSW, while a new company to manufacture and sell the range of "Lemcol Wheels and Castors" is established in South Australia with a license manufacturing distribution agreement to us the Clyde-Apac Lemcol brand and trade-marks.
- **2009** Clyde-Apac and Macquarie Engineering merge to create a more composite and complete duct collection and maintenance service company.

- **2010** Clyde-Apac Air Filtration continued to grow and re-commenced its export of Bio Safety Class 2 and Cytotoxic cabinets into Asia while increasing air filter service and supply contracts in Australia.



- **2013** “Lemcol Wheels and Castors” is restructured into an on-line business operating with a more simplified format and merged in Australia with Selson Air Jacks.



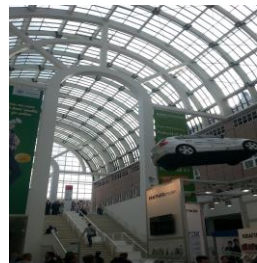
- Clyde Filtercorp Dust and fume suppression System installed in a cement works In Sydney



- **2014**

Selson at

Automechanika



Selson sales

take off

- Clyde-Apac at ARBS introducing a demonstration of the Australian manufactured Nano Vee filter subjected to water mist

Since release Clyde-Apac

have manufactured thousands of

these units for sale in Australia and overseas.



- Clyde-Apac in Jakarta exhibiting the Australian manufactured Cytotoxic CG2000 Drug Safety Cabinet Product fully compliant to Australian Standards AS2567 are highly regarded in overseas laboratories for offering a safe work environment



- Australian manufactured Clyde-Apac PCR and Class 2 Bio safety Cabinets installed alongside Cytotoxic Safety cabinets in a Jakarta Research hospital. These cabinets are all maintained and certified Each year to Australian Standards AS1807.



- **2015**

Specialised HEPA filter installation upgrades undertaken replacing old systems installed by Clyde-Apac in 1983 with new HEPA module version designs that still remain fully compliant to Australian Standards. If you want something to last insist on Clyde-Apac HEPA modules!



- The Clyde-Apac identity gets a make over



- **2016** Clyde-Apac and Lemcol today remain one of Australia's most iconic and enduring and symbolic manufacturing brand names. While many Australian industrial conglomerates have fallen by the way side the light continues to shine bright for Clyde-Apac and Lemcol. With Australian manufacturing now rendered largely redundant in many industry sectors Clyde-Apac and Lemcol continue to develop and innovate under private ownership in both Australia and overseas.



2016 Selson Air Jacks exhibited in Seoul South Korea and below

Selson Air Jacks at Frankfurt Germany,



Throughout 93 years Apac Industries, Lemcol, and Clyde-Apac have had their share of growing, contracting and change, as the Australian economy and events of the day have dictated. The underpinning strength has been the passion and will to succeed from its many and varied employees as evidenced from the many attached newspaper clippings recorded from the day.

The company today is closely held by the Young family, who have retained an active participation in the company for more than thirty-four years apart from a short period between March 1998 to December 2001, when it was acquired from Downer EDI.

All information provided within the attached is Australian copyright protected under Law and the use of any images or information will require written permission from the owners.